

# Dove Crossing—Brandon Berry Construction

## STANDARD FEATURES AND OPTIONS

### ENERGY EFFICIENCY—STANDARD

#### Radiant Barrier Roof Sheathing

Double Pane Insulated Windows  
Central 14+ SEER HVAC  
R-30 Blown Insulation in Ceilings  
R-19 Batt Insulation in Sloped Ceilings  
R-13 Batt Insulation in Walls  
Outside Insulation Board  
Roof-Ridge Vents  
40 gal Hot Water Heater  
Polyseal Foam in all Wall Penetrations

### EXTERIOR—STANDARD

Brick/Stone or Hardie Plank Exteriors  
Landscape Package  
Concrete Rear Patio  
Sidewalk from Driveway to Front Door  
Full privacy fenced back yard  
Full sod yard-Included

### GENERAL CONSTRUCTION-STANDARD

Raised Ceiling Treatments  
Six Panel Painted Interior Doors  
Two Tone Interior Paint  
All bedrooms, living room pre-wired for phone,  
and cable TV.  
Designer Light Fixtures  
Ceiling fans in all bedrooms and living room.  
Copper wiring and Wirsbo Plumbing System  
Durable Steel Garage Door

#### Garage Door Opener-Included

30 year warranted dimensional shingles  
16” on-center studs-All load bearing walls.  
FHA Graded Carpet  
8 Lb. Carpet pad

#### Tile entry, kitchen, utility and baths –Included

### SECURITY –STANDARD:

Pre-wired for Security System  
Dead Bolt Locks  
Smoke Detector  
Security Flood Lighting Front and Back

### KITCHEN PACKAGE—STANDARD

#### GRANITE COUNTERS

#### CUSTOM DESIGNED CABINETS

Stainless Steel 6” with Sprayer  
Washerless Delta Faucets in Shiny Chrome Finish  
Appliance package (Black or White)  
Electric Free Standing Range/Oven  
Dishwasher  
Microwave/Vent Hood  
Disposal

### BATH PACKAGE-STANDARD

Towel Bars and Paper Holders  
Cultured Marble Vanities  
Lasco garden tub/shower or tub/shower units  
Medicine Cabinets in all baths  
Linen cabinet above toilet if no linen closet.

### UTILITY ROOM/CLOSET FEATURES

Located In-House on All Models  
Utility Cabinet above Washer/Dryer  
Washer/Dryer Connections.

### AVAILABLE OPTION PACKAGES:

See Brandon Berry Construction—Options Sheet !

*\*Call Joy Caldwell for Option Pricing*

### WARRANTIES:

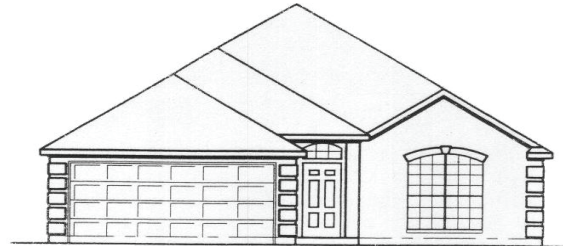
One/Two/Ten Year Warranty Program  
Builder-Homeowner Walkthrough before Closing.

\*The above features are included on most homes built by Brandon Berry Construction however Builder reserves the right to make changes to, plan designs, brands or models so long as they are comparable in quality and features. Features, price and availability may change without notice.

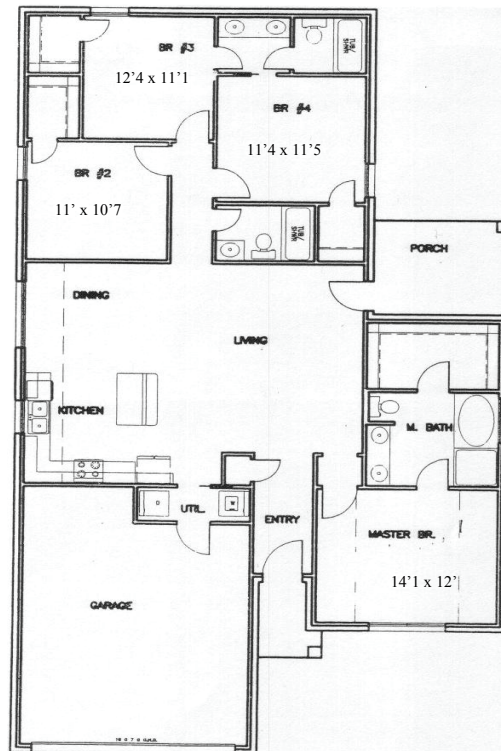


# Berry-Construction-Dove Crossing Plan 1632

- Four Bedrooms
- Three Baths
- 1632 sq ft (BP)
- Large living
- Kitchen w/granite counters!
- Window seat in Breakfast
- Large bedrooms w/ walk-in closets
- Radiant Barrier Roof Sheathing
- Tile Floors in kitchen/breakfast, entry, baths and utility.
- Garage door opener.
- Full Sod Yards
- Full Privacy Fenced



FRONT ELEVATION



**Option Upgrades Available:**

- Sprinkler System- \$1500.00**
- Washer/Dryer/Refrigerator -\$1350.00**
- 2" Faux Wood Blinds- \$850.00**

**LOT OF SPACE FOR THE \$\$\$\$**

**LARGE BEDROOMS, ALL WITH WALK-IN CLOSETS**

***ASK ABOUT COMPLETION DATES AND LOTS AVAILABLE!***

**Joy Caldwell, GRI, CRS**



**Cell: (979) 324-3833      Office: (979) 846-2894**  
E-mail: [j.caldwell6@verizon.net](mailto:j.caldwell6@verizon.net)

**See all homes in Dove Crossing & B/CS at : [www.joycaldwell.com](http://www.joycaldwell.com)**

Brandon Berry Construction reserves the right to revise specifications, elevations, and dimensions without notice. All dimensions are approximate. Layout may be revised. Revised 03/08

# Berry Construction-Dove Crossing Plan 1729



- Four Bedrooms-Split Bedroom Plan
- Three and half Baths
- 1729sq ft (BP)
- Large living
- Kitchen w/granite counters/Large Breakfast
- One bedroom has private bath, two have Hollywood bath.
- RADIANT BARRIER ROOF SHEATHING
- Tile Floors in kitchen/breakfast, entry, baths and utility.
- Granite Counters in Kitchen
- Cultured Marble Vanities in Baths
- Garage door opener.
- Full Sod Yards
- Full Privacy Fenced
- Close to the new Creek View Elementary—top Open Aug 09'



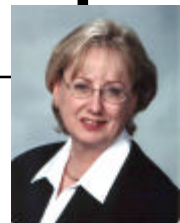
## Option Upgrades Available:

**Sprinkler System—\$1500.00**  
**Washer/Dryer/Refrigerator-\$1350.00**  
**2" Faux Wood Blinds- \$850.00**

*For More Information call: Joy Caldwell, GRI, CRS*



**Cell: (979) 324-3833 Office: (979) 846-2894**  
E-mail: [j.caldwell6@verizon.net](mailto:j.caldwell6@verizon.net) Webpage: [www.joycaldwell.com](http://www.joycaldwell.com)  
To see all homes in Dove Crossing go to [www.coventryglenrealty.com](http://www.coventryglenrealty.com)!



Brandon Berry Construction reserves the right to revise specifications, elevations, and dimensions without notice. All dimensions are approximate. Layout may be revised. Revised 0308